

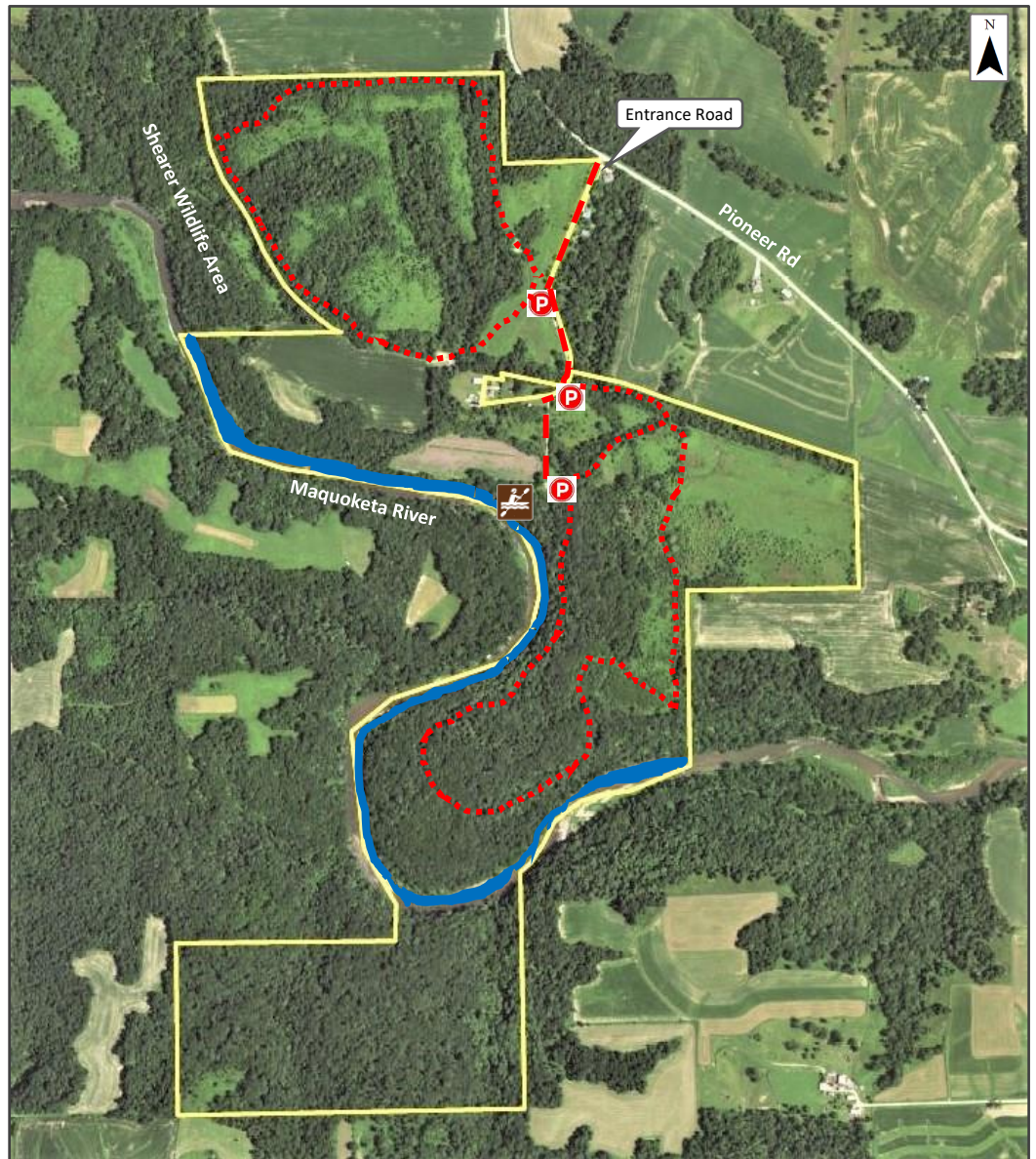
Retz Wildlife Area

(2633 Pioneer Rd, Delhi, Iowa)

Retz Wildlife Area is located 2 miles southeast of Delhi in sections 28 and 33 of Delhi Township (T88N-R4W) Delaware County Iowa.

The original 175.0-acre Retz Memorial Park was purchased by the Delaware County Conservation Board in 1972 with assistance from the Iowa DNR - Federal Land & Water Conservation Fund (LWCF). The park was named in memory of Lyle E. Retz. He was the first Executive Director for the Delaware County Conservation Board and was instrumental in initiating the acquisition of this property before his sudden death in an auto accident. He saw the benefit of protecting unique natural areas along the Maquoketa River so they would be available for future public use.

The Retz Area is unique from the stand point that the Maquoketa River intersects with towering high rock bluffs along the west and south boundaries. This is a heavily wooded area with a stand of mixed hardwood trees consisting of oak, walnut, hickory, maple and elm. Providing excellent wildlife habitat for white tailed deer, wild turkey, pheasants, small game and furbearing animals.



Legend

- Parking Area
- Property Boundary
- Primary Trail
- Entrance Road
- Maquoketa River
- River Access

Acres: 433.0
Habitat: 18.0 acres cropland
105.8 acres grassland
309.2 acres woodland
Species: Deer, Turkey, Pheasants, Small game and Furbearers

Open to hunting and trapping according to DNR seasons

In April of 2001 Delaware County Conservation Board had the opportunity to acquire an additional 258.0 acres adjoining the Retz area to the north and west. Cooperating partners helping with this acquisition were:

- Iowa Department of Natural Resources – Iowa Habitat Stamp Program
- Iowa Natural Heritage Foundation (INHF)
- Delaware County Pheasants Forever
- Delaware County Conservation – REAP

With this acquisition the total acres for Retz Wildlife Area is 433.0.

The new addition was also a connecting land link from Retz Wildlife Area to Shearer Wildlife Area. Thus, making a total complex of 583.0 acres of green belt corridor. This corridor protects and enhances water quality along three miles of the Maquoketa River, making this stretch of river an excellent small mouth bass fishery for catch and release. It is also a very popular area for canoers, kayakers and tubers with the development of a river access point at the Retz parking area.

Over the years, Delaware County Pheasants Forever Chapter has assisted County Conservation with several wildlife habitat enhancements to the Retz Wildlife Area which include:

- 2002 – Over 20.0 acres of native grass planting
- 2003 – Completed a direct seeding of acorns and nuts on 3.0 acres
- 2006 – Upland tree planting on 13.0 acres utilizing over 10,000 seedling trees and shrubs for wildlife habitat
- 2008 – Planted over 4,600 seedling trees on 7.6 acres
- 2017 – Completed a 5.0 acre native prairie planting for Monarch butterfly habitat with assistance from the Iowa Natural Heritage Foundation
- 2017 – Completed a direct seeding of acorns and nuts on 7.0 acres

These projects were completed and are maintained by prescribed burning, spraying and mowing for weed control.

The Retz Wildlife Area along with the Maquoketa River provides some of the most diverse habitat for wildlife in all of Delaware County.



Delaware County Conservation

2379 Jefferson Rd
Manchester, IA 52057
563-927-3410
delawareccb@gmail.com