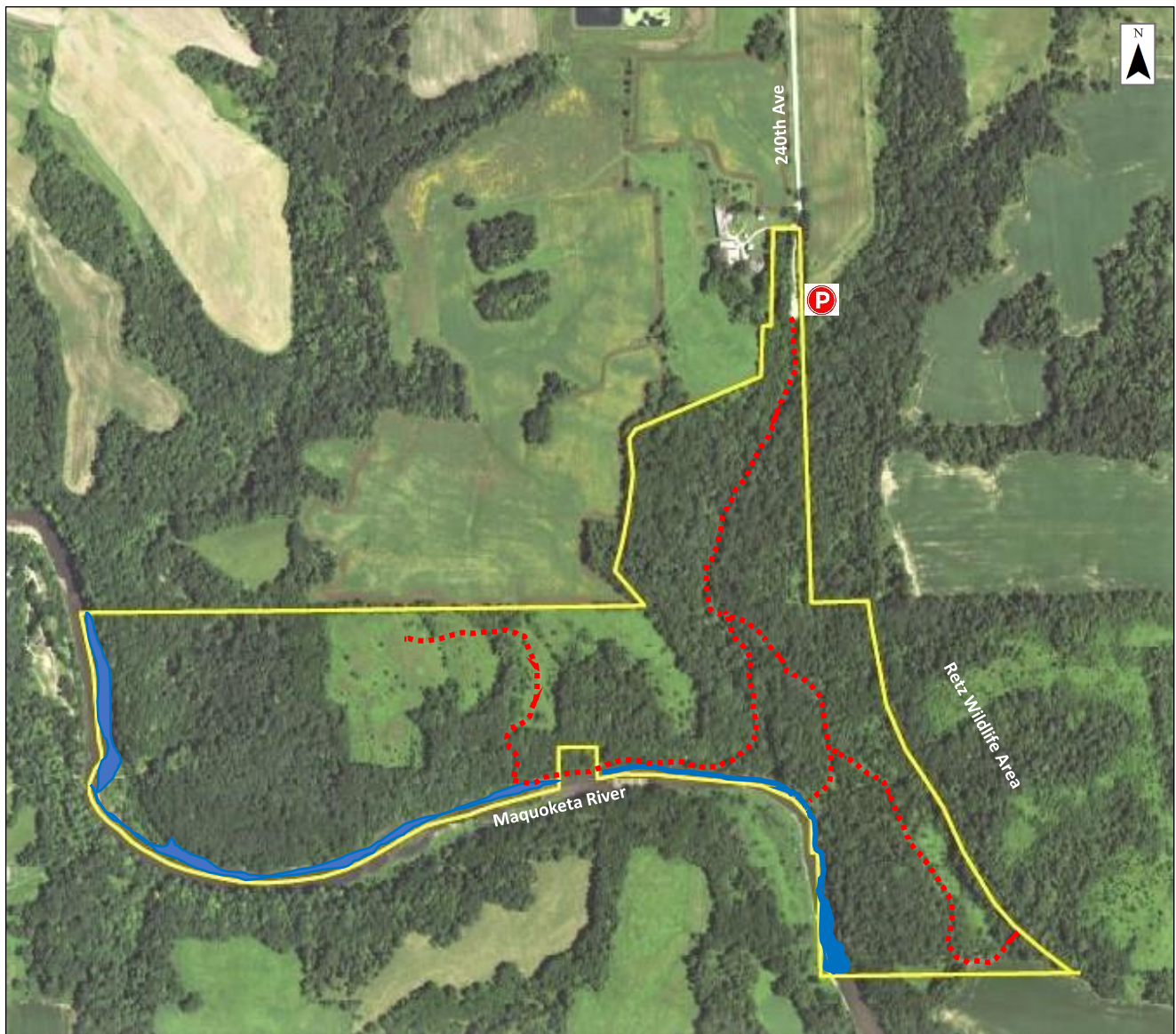


Shearer Wildlife Area

(2592 240th Ave, Delhi, Iowa)



The Shearer Wildlife Area is located 1.5 miles south of Delhi in Section 28 & 29 of Delhi Township (T88N-R4W), Delaware County, Iowa.

In 1991 Delaware County Conservation was able to acquire 150.0 acres of rolling land as a green belt corridor along the Maquoketa River. The George Shearer family donated funding to assist with the acquisition of this project. Other partners assisting with this project were:

- Iowa Department of Natural Resources (DNR) – Wildlife Habitat Stamp Fund
- Iowa Resource Enhancement and Protection Program (REAP)

Legend

- | | |
|---------------|-------------------|
| Parking Area | Property Boundary |
| Primary Trail | River |

Acres: 150.0
Habitat: 104.0 ac. Upland/Woodland
46.0 ac. Grassland
Species: Deer, Songbirds, Turkey, Small game, Furbearers

Open to hunting and trapping according to DNR seasons

- Delaware County Conservation

The 104.0 acres of woodland contains a variety of upland trees such as:

- Red Cedar
- Hickory
- Mixed Oak
- Elm
- Walnut

In 1992 Delaware County Pheasants Forever Chapter assisted County Conservation with planting over 9,000 trees on 13.0 acres for additional wildlife habitat. Pheasants Forever also assisted with planting 5.0 acres to native prairie grasses in 1997.

The diversity of upland cover provides habitat for:

- Songbirds
- Deer
- Turkey
- Furbearers
- Small Game

The south and east portion of this property borders the Retz Wildlife Area forming a 580.0 acre complex for outdoor recreation.

The extensive trail system allows public access for:

- Hiking
- Hunting
- Outdoor Recreation

This section of the Maquoketa River provides over a mile of river frontage, which is a popular spot for:

- Canoers
- Kayakers
- Tubers
- Fishermen (small mouth bass)



Delaware County Conservation

2379 Jefferson Rd
Manchester, IA 52057
563-927-3410
delawareccb@gmail.com