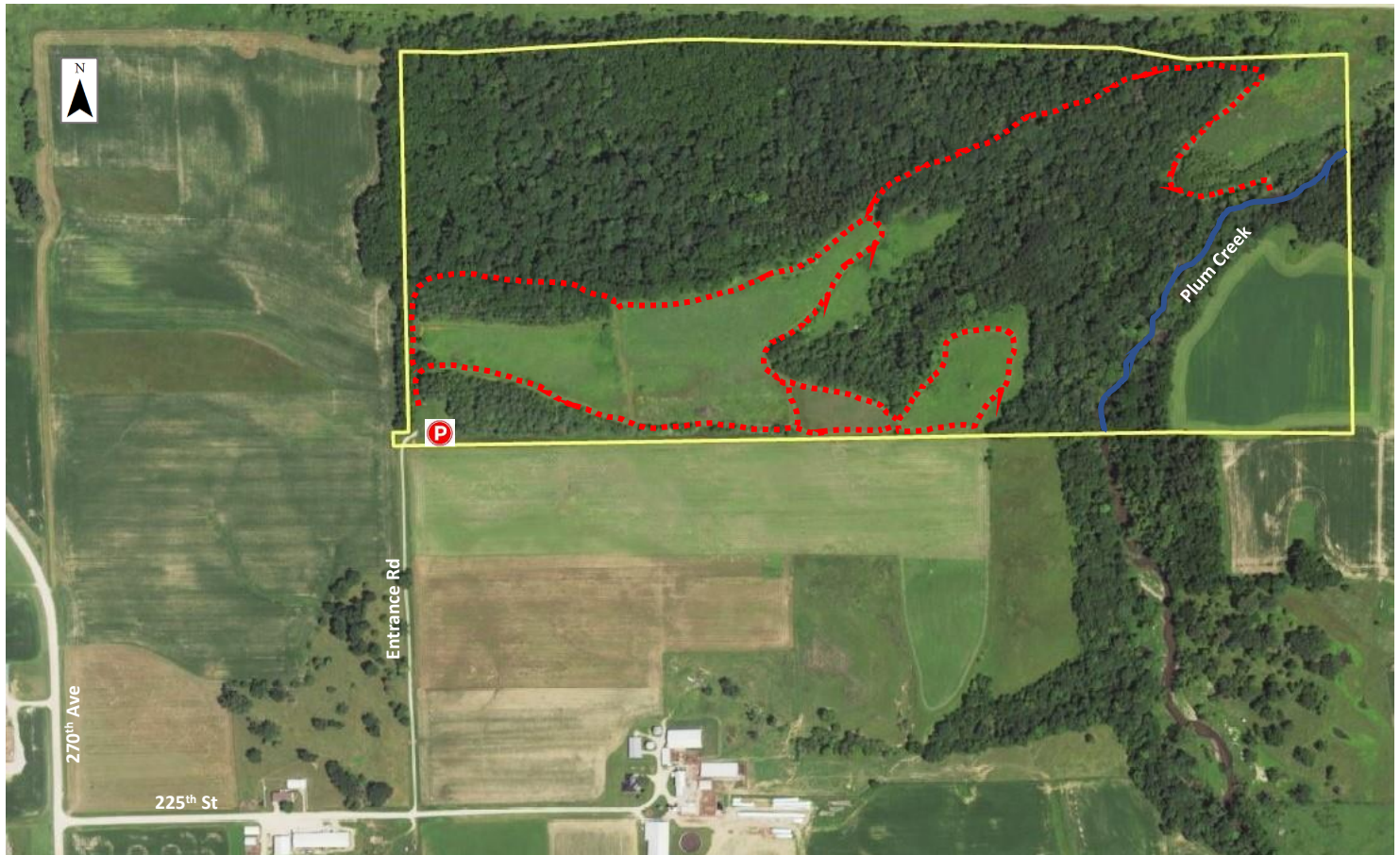


Indian Hills Wildlife Area

(2725 225th St, Earlville, Iowa)



Legend

- Parking Area
- Primary Trail
- Park Boundary
- Plum Creek

Indian Hills Wildlife Area is located 1 mile southeast of Earlville in section 1 of Delhi Township (T88N-R4W), Delaware County, Iowa.

This 108.0-acre property was purchased by Delaware County Conservation in 1989 from the Iowa Department of Transportation (DOT). Assistance from the Iowa Natural Heritage Foundation (INHF) and Iowa DNR (Wildlife Habitat Stamp) helped make this acquisition possible.

As the name applies, there are five documented Native Indian Burial Mounds on the Indian Hills property. Archeologists from the University of Iowa discovered the mounds in 1974 after a report from the Iowa DOT, which was routing its course for Highway 20 road project. The mounds were used by the Woodland Indians tribe around 2000 BC to 500 AD.

Acres: 108.0
Habitat: 79.2 ac. Upland/Floodplain
20.1 Native grasses
8.7 ac. Cropland
Species: Deer, Turkey, Small game, Furbearers
Open to hunting and trapping according to DNR seasons

This property was purchased to maintain the cultural significance of the area and to provide recreational activities for the public such as:

- Hunting
- Trapping
- Hiking
- Outdoor enjoyment

In 1994, the Delaware County Pheasants Forever Chapter assisted Delaware County Conservation with planting 4,000 trees, shrubs and native grasses on over 20 acres of this area enhancing it for upland wildlife.

In October of 2019, 4.0 acres were planted to acorns and nuts as part of a direct seeding demonstration project to establish oaks and walnuts for woodland habitat.

Today the wildlife area contains:

- 20.0 acres of native grasses for upland nesting cover
- 8.0 acres of cropland as a food source for wildlife
- Over a quarter mile of Plum Creek flows through the eastern portion of this area

The diversity of rolling hills, stream bottom and uplands provide habitat for:

- Deer
- Turkey
- Furbearers
- Small Game
- Pheasant
- Song Birds



Delaware County Conservation

2379 Jefferson Rd
Manchester, IA 52057
563-927-3410
delawareccb@gmail.com