

# Pin Oak Wildlife Area

(2291 185<sup>th</sup> Ave, Manchester, Iowa)

The Pin Oak Wildlife Area is located 2 miles southeast of Manchester in section 4, 5 and 9 of Milo Township (T88N-R5W), Delaware County Iowa.

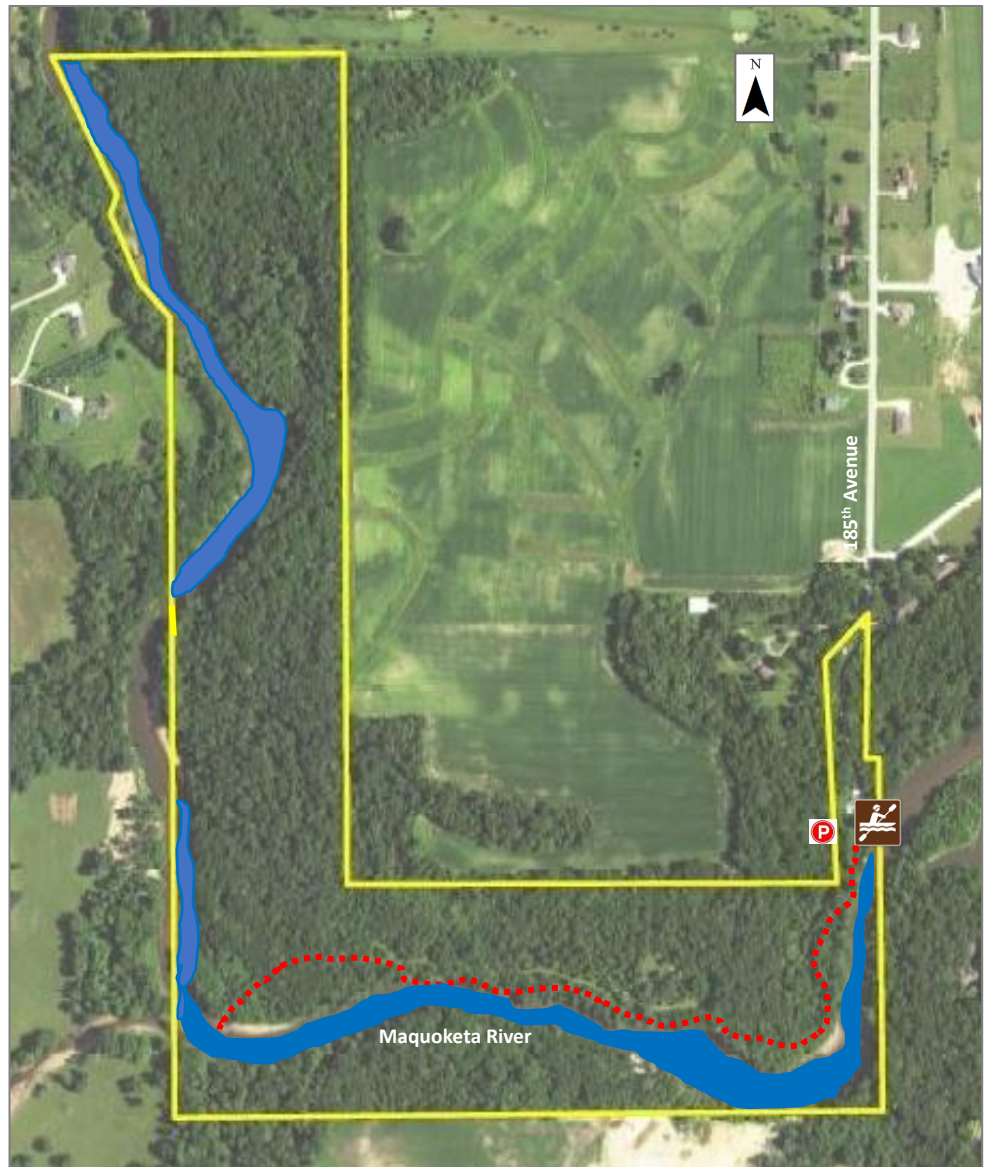
In March of 1967 the Delaware County Conservation Board recognized the importance to establish a green belt corridor following the Maquoketa River from Manchester to Baileys Ford. With this goal in mind, the Conservation Board purchased 100 acres southeast of Manchester along the Maquoketa River. In 1980 an additional 3 acres adjoining this area on the northwest corner was donated to the Delaware County Conservation.






The 103-acre property consists of river bottom and bluffs along the east and north banks of the river. The area is predominately forest vegetation consisting of:

- Pin Oak
- Red Oak
- Burr Oak
- Hackberry
- Hickory
- Elm
- Cherry
- Walnut
- Silver Maple
- Cottonwood
- River Birch

Thus, derived the name Pin Oak Wildlife Area.

In the mid to late 1800's this area was also known to early settlers. An old ford with a hard rock bottom allowed pioneer stage coaches, wagons and settlers to cross the river as a shortcut route to Manchester from Dubuque to Quasqueton. This ford can be located yet today.



<b>Legend</b>	
	Parking Area
	Primary Trail
	River
	Property Boundary
	Canoe/Kayak Access

Acres: 103  
Habitat: Forest Vegetation  
Species: Deer, Wild Turkey, Small Game, Songbirds, Fur Bearers

Open to hunting and trapping according to DNR seasons  
and  
County Conservation Regulations

In October of 1999 County Conservation established access to the Maquoketa River by installing a canoe ramp and parking lot. The Pin Oak Access has become an important launch as part of the Maquoketa River Water Trail which was designated in 2016. This river access is approximately midway from Manchester to Baileys Ford and allows canoers, kayakers, tubers and fishermen a convenient place to exit or enter the river.

The public can also access the developed hiking trails which follow the river along the southern portion of the property. Wildlife are abundant in this area such as:

- White-tail Deer
- Wild Turkey
- Small Game
- Fur Bearers

Hunting is allowed in accordance with Iowa DNR and Delaware County Conservation hunting regulations.

Delaware County Conservation continues to manage the Pin Oak Wildlife Area as a greenbelt corridor providing wildlife habitat and recreational use for the public.



### Delaware County Conservation

2379 Jefferson Rd  
Manchester, IA 52057  
563-927-3410  
delawareccb@gmail.com