



Courthouse at Winterset
Madison County, Iowa
Built in 1876 of native limestone.

Madison County Zoning Department

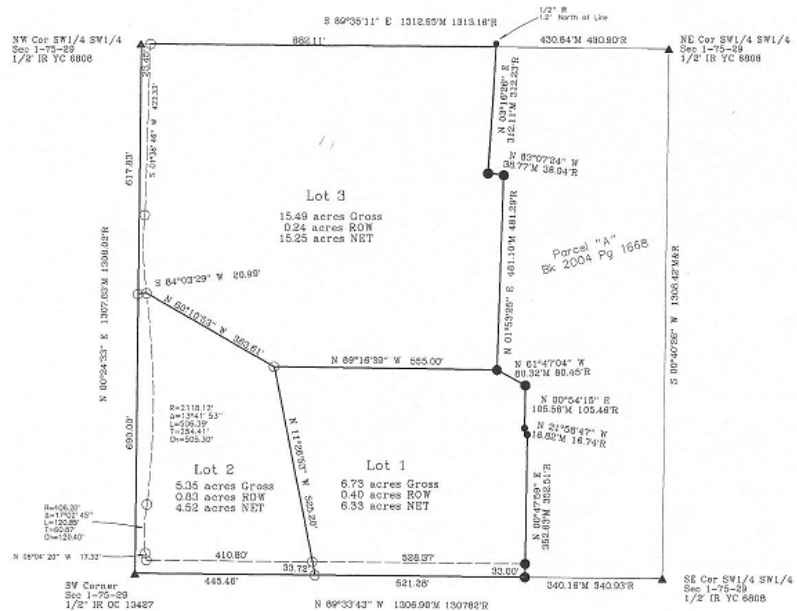
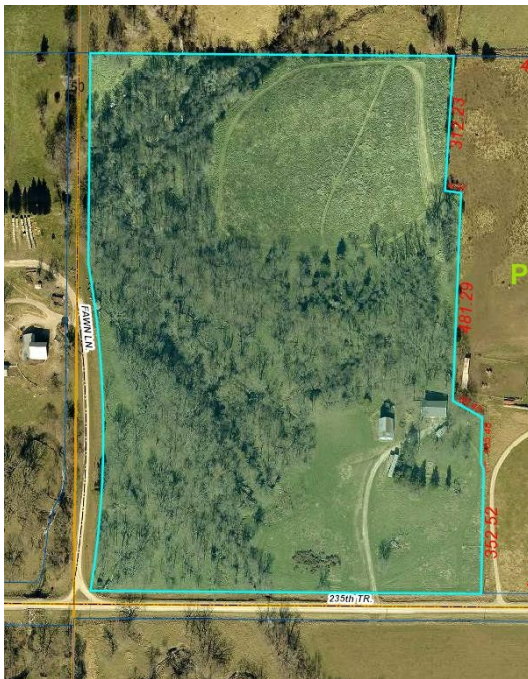
C.J. (Jeff) Nicholl, Zoning Administrator

Posted Annex & Web: 01-03-22

Emailed: 01-03-22

PUBLIC HEARING NOTICE

You are hereby notified the Madison County Board of Supervisors has scheduled a public hearing on the request of Quenten Meyer & Amber Meyer, as Co-Trustees for Quality Assurance Trust under Trust Agreement dated December 21, 2015, for final plat approval of a Minor Subdivision to be known as Raven's Ridge Subdivision. The purpose of the request is to allow the division of land to create a 3 lot Minor Subdivision on the North side of 235th Trail in section 1, Webster Township. Legal description follows: *The Southwest Quarter (1/4) of the Southwest Quarter (1/4) of Section 1, Township Seventy-Five (75) North, Range Twenty-Nine (29) West of the 5th P.M., Madison County Iowa, EXCEPT Parcel "A" located therein, containing 11.775 acres, as shown in Plat of Survey filed in Book 2004, Page 1668 on April 16, 2004, in the Office of the Recorder of Madison County Iowa, Iowa.*



You are further notified the public hearing on this request will be held by the **Madison County Board of Supervisors** on **Tuesday January 11, 2022** at its regular meeting **beginning at 10:00 a.m.** in the lower level conference room at the Madison County Annex, 201 W. Court, Winterset, Iowa, at which time and place all persons interested in said matter will be given an opportunity to be heard.

Additional information may be obtained at the Madison County Zoning Office.

C.J. Nicholl, Administrator, Madison County Zoning