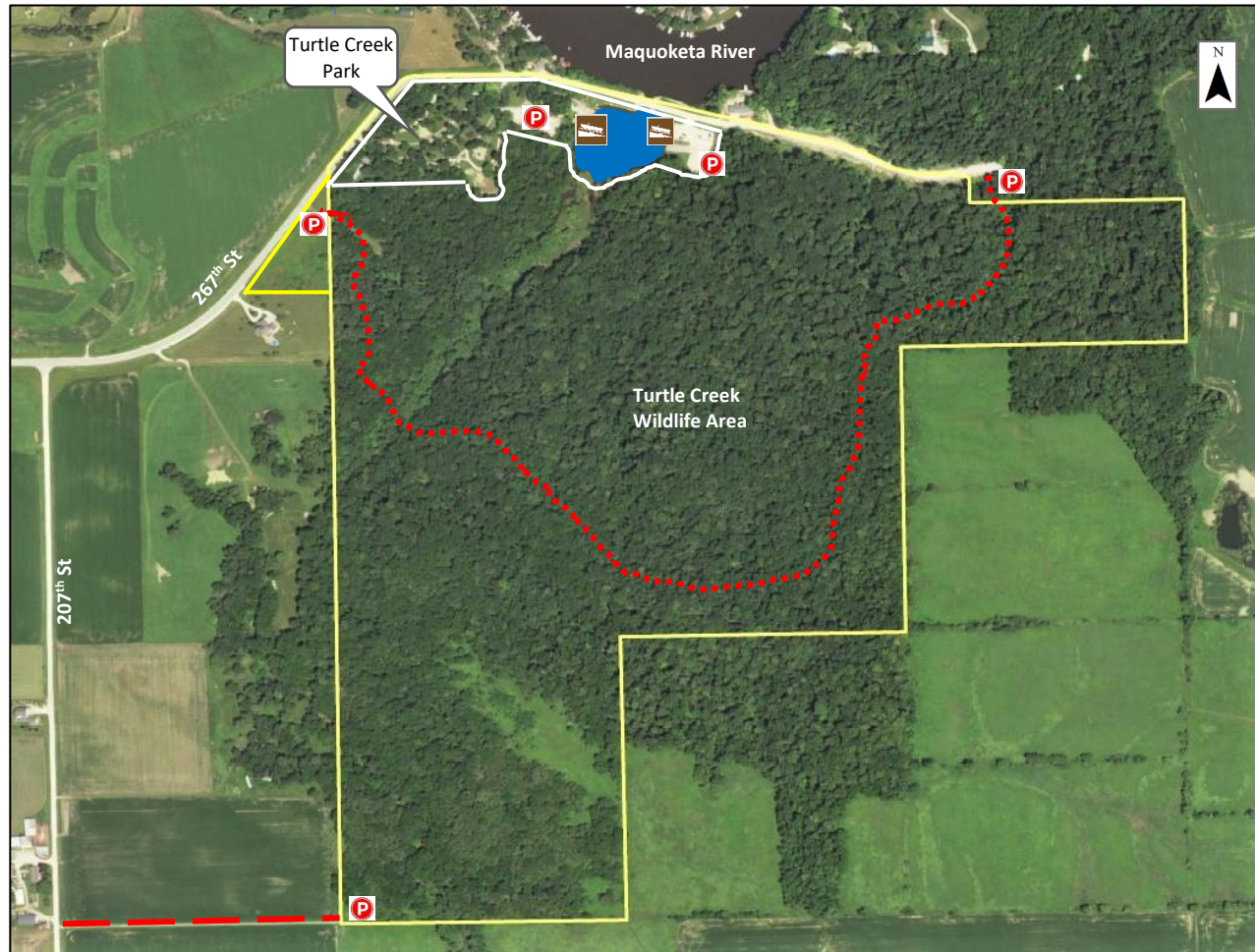


# Turtle Creek Park and Wildlife Area

(2124 267<sup>th</sup> St, Delhi, Iowa)



The Turtle Creek Wildlife Area is located 3.5 miles southwest of Delhi in Section 25 & 36 of Milo Township (T88N-R5W), Delaware County, Iowa.

In 1960 Delaware County Conservation Board purchased 111 acres. The original property had been settled by the Tuttle family who built a log cabin near the creek. Over the years the name changed to Turtle Creek. The creek flows through the west portion of this area, thus came the name Turtle Creek Wildlife Area.

Early settlers used this area for lumber and fuel wood for their cabins located out in the more open parts of the county. The woodlands were also grazed by livestock.

Every effort has been made to accurately depict the boundaries on this map. However, users should rely on boundaries actually located in this area to ensure they do not trespass on private property.

Legend			
	Parking Area		Property Boundary
	Bay		Boat Ramp
	Access Road		Park Boundary
	Hiking Trail		
Acres: 200.0			
Habitat: 182.0 ac. Upland/Woodland			
6.0 ac. Native grasses			
12.0 ac. Turtle Creek Park			
Species: Deer, Turkey, Small game, Furbearers			
Open to hunting and trapping according to DNR seasons and County restrictions			

In 1964 county conservation purchased an additional 33 acres and another 50 acres in 1987. Bringing the total of the Turtle Creek area to over 200 acres.

Turtle Creek flows into Turtle Creek Bay which is a backwater of Hartwick Lake, better known today as Lake Delhi where the two main public boat ramps are located.

The topography of this area is rolling hills and wooded ravines making it great wildlife cover. The forest cover consists of:

- Mixed Oak
- Elm
- Walnut
- Hickory
- Maple
- Ironwood
- Red Cedar

From 1960 to 1983 the county conservation developed 12.0 acres as Turtle Creek Park. This provided the public with facilities for camping, picnicking and other recreation. A boat ramp was installed along with two drilled wells for water, electrical camping sites, vault restrooms, shelter house and playground area.

Improvements between 2015 and 2017 included the addition of two restrooms and a boat ramp installed on the Turtle Creek Bay, along with updating the playground and adding additional camp sites.

The remainder of the Turtle Creek Area is managed for timber and upland woodland habitat for wildlife such as:

- Furbearers
- Deer
- Turkey
- Small Game

This area continues to offer a natural experience for hikers, hunters and others to enjoy the outdoors.



**Delaware County Conservation**

2379 Jefferson Rd  
Manchester, IA 52057  
563-927-3410  
delawareccb@gmail.com